



# Prospect

October 2007

Price when sold £1

## Niamh's jumble



No – we don't take pets as jumble so Martha, the pet of the Cusack household in Barnes, can be reassured as her 'mum' Niamh Cusack chats with neighbour Paula Mortimer after handing over her donation for the BCA annual Jumble Sale. We are grateful to Niamh – and all the other people who find time in busy lives to sort out jumble for us – and that includes many of the acting profession who live in Barnes.

Niamh is currently appearing in *The Enchantment* at the Cottesloe Theatre until 1st November. She finds the role of a vengeful, discarded lover one that has a wealth of character to explore. "I have played a lot of 'Goodies' in my time" says Niamh, "whereas the character of Erna in 'The Enchantment' has given me the chance to explore the bitter and twisted side of my nature". In May 2008 she will engage her musical talents to narrate an excerpt of 'Peter and the Wolf' at the Wathen Hall, in concert with the London Handel Players.

William Mortimer

**BCA annual jumble sale – Kitson Hall on Friday October 5th (from 7-9pm) and Saturday October 6th (10am – 2pm). PLEASE VISIT this amazing, huge event.**

## Barnes teenager faces Arctic challenge

Barnes 16-year-old Cecily Henderson has two 'mountains' to climb in the coming months. One is a trek into the Arctic Circle to monitor global warming among glaciers; the other is to raise £4,400 to support her preparations and presence on the team, organised by the British Schools Exploring Society (BSES).

Cecily was among 60 youngsters from 16–23 year olds chosen to journey to Svalbard, which is a remote area 1000km from the North Pole, to carry out this work.

The trip will involve ice climbing, remote country trekking and cross-country skiing across one of the most remote areas of the world untouched by humans.

'I chose to apply for the expedition because, although I'm a typical London teenager who likes shopping and the cinema, I realise that global warming is hugely serious and particularly so for my generation who are set to inherit the problem' said Cicely. 'Svalbard is a part of the Arctic Circle where climate change with dramatic melting of the polar ice-cap is affecting sensitive eco-systems – and the polar bear. The repercussions extend to the floods we've experienced this summer.'

Can she make a difference? 'I shall be performing an important job in gathering data and working alongside qualified scientists' she says.

Already she has organised an 'Arctic Meltdown Disco' for 11-13 year olds on Saturday, 27th October at the Putney Leisure Centre (tickets £12) and has had



'fantastic support' from local shopkeepers in donating raffle prizes. Raffle tickets can be bought at Jasmine, Making Waves and Tanyas's Fish Bar, with the draw to take place on December 14th.

Cecily – who never seems to do things by halves – is studying for her AS Levels but in the meantime is available for baby-sitting, dog walking, waitressing and 'just generally helping around the house' during weekends and school holidays!

For more about this enterprising youngster, email [cecily.henderson@hotmail.co.uk](mailto:cecily.henderson@hotmail.co.uk) or telephone 07901 826 111.

### HELP!

**We are desperate for more helpers – to sort jumble and particularly to man the stalls on the Friday evening and Saturday. Even if you can only spare an hour we'd be most grateful.**

The dates of the Sale are: Friday evening, October 5th 7–9pm and Saturday, October 6th 10am–2pm.

Please contact Hilary at Rose House: 8878 2359, fax 8878 6101 or email her at [bca@barnesvillage.org.uk](mailto:bca@barnesvillage.org.uk).

This Annual Jumble Sale normally brings in more than £5000 to our funds – but it will be a great deal less if we don't have the people to sell. So – please – **HELP!**

**BCA**



**matters...**

**Executive Matters** p2  
**Le Pecq** p2  
**Barnes Halls for Hire** p6

## News from the BCA Executive

Donations policy, the 2008 budget, and the maintenance of Rose House were the principal discussion points at the first meeting of the Executive after the summer break. Isobel Woolf introduced her well-researched report on the BCA's approach to its charitable work and, after a lengthy discussion, it was agreed that we should: (a) devote a higher proportion of our available resources to good causes; and (b) be both more rigorous in assessing needs and proactive in letting the community at large know more of our work.

Bob Glover has devoted a large proportion of his summer to Rose House and we now have some handsome new sheds at the back of the house, a new boiler with associated plumbing alterations, and some electrical and remedial decorative work. Bob's care of Rose House has been exemplary, and beyond the call of duty, over many years. He warned that we may face considerably more

expenditure involving possible window replacement in the next year or two and, as a result, the Executive agreed to ring-fence a proportion of the BCA's reserves specifically to finance future Rose House expenditure.

Other items discussed included the possibility of some environmental improvement around the Barnes Green Social Centre and an extension to the Christmas lights programme.

Mike and Gill Spillane will represent the BCA at celebrations in Le Pecq to commemorate the tenth anniversary of Le Pecq's twinning with Hennef (Germany) – see next column for details of other activities with Le Pecq.

Finally, all BCA volunteers will be invited to a giant 'thank you' party on Wednesday November 14th in recognition of all their work. An important date for the diary!

*David Stott (Chairman, BCA Executive)*

## Le Pecq – what's happening next?



Plans are in hand for the following events between now and the end of the year.

We are delighted that Barnes Eagles Football Club is making plans for teams from two age groups to participate in a football tournament in Le Pecq at the end of the month and we hope to be able to report on this in the November issue of *Prospect*.

Our friends in Le Pecq are looking forward to welcoming a group of visitors from Barnes over the weekend 10th-11th November – contact Mike as soon as possible for more information.

A group of visitors from Le Pecq will be coming to Barnes for the weekend 1st-2nd December. This weekend has proved particularly popular in the past: the Barnes Choir will be staging their Christmas concert, the Barnes Charity players perform the pantomime *Cinderella* and there is the opportunity to stock up on Christmas puddings!

If you would like to participate in the visit to Le Pecq in November or be involved in the visit to Barnes in December, possibly by offering accommodation, please contact Mike, [mhspillane@hotmail.com](mailto:mhspillane@hotmail.com), or via Rose House.  
*Mike Spillane*



We have not met over the last two months but a few things have come in which will need our attention:

### 1. Barnes Station Access Improvements

Margaret Sharp has written on our behalf and welcomed most of the proposed improvements.

### 2. Barn Elms Playing Fields

The Regeneration report was submitted for discussion to Cabinet 03/09/07. The Cabinet accepted most of the plans. The principle of disposal of land freehold for enabling development was rejected. This land for enabling development will now be leasehold. The Cabinet also decided that there will be no additional floodlighting permitted. The land for enabling development is near the fishing lake and Queen Elizabeth Walk.

### 3. Planning: Three planning applications have been submitted to the Council, which the group will discuss at the next meeting:

- a. The Coach & Horses Pub and Richmond Housing Partnership have applied to demolish the rear modern

extension to Claridge House and the 22 garages. They want to replace this by constructing new retail space and an extension to the Pub, renovating the existing Claridge House and constructing four maisonettes and four patio houses with new access to the houses.

- b. The Harroddian School have three applications for consideration: a security station by the gate entrance to the school, extension of the storage area for equipment and the building of a Sports Hall by Lonsdale Road and Windermere Court.

- c. Rocks Lane Tennis Club have submitted a retrospective planning application to build a further two floodlit multi-sport courts and to extend parking space from 25 to 52 spaces.

Our next meeting will be on Monday 24th September at 8pm in Rose House.

Members are very welcome – as you can see there are many things that have to be discussed and your input is always very welcome.

*Susan Boyd, Chairman.*

**Tuesday 9th October at 7.30 pm  
Barnes Green Centre**

### **BARNES AND MORTLAKE AREA CONSULTATION MEETING**

This is your annual chance to question all six local councillors who, between them, represent Barnes and Mortlake. Many of the issues that are raised in this copy of *Prospect* can be followed up at this meeting



As you may know, the post of part-time Commonkeeper is funded jointly by the BCA, Richmond Council and the Estate Agents Charles Banks and Rea.

Now the BCA has produced some clothing, not exactly a uniform, to identify Russell to those who don't know him.

## Watch this space

Richmond Council wants to improve the setting of the Barnes Green Centre – there is no doubt it looks run down as can be seen in this picture. The Council will be working on first ideas with local people and could be looking at anything from a modest tidy-up to a bigger scheme needing match funding.

Do you have ideas and aspirations for this area? Write to Rose House, 70 High St, SW13 9LD.

And remember, in the Barnes Green Centre on 9th October at 7.30pm, the Area Consultation Meeting will be a good time to exchange ideas.

Katie Gent



## No extra floodlighting – major improvements at Barn Elms

The Council committed itself in early September to ensuring that there should be no more floodlights on Barn Elms fields than those permitted at present. This is to respect the environmental importance of the London Wetlands Centre next door; crucial to the decision has been the nearby presence of bats, which shun floodlighting and are a protected species.

The Council has the ability to make ‘no extra floodlights’ a binding decision in its capacity as owner of Barn Elms – quite separately from the Planning system.

In order to fund much-needed improvements to public sporting facilities at Barn Elms, the Council is advertising a long-designated area (10% of the grounds) for sale or long leasehold. The improvements sought in return are:

- new pitch layouts, ground aeration and drainage,
- pavilions with new changing rooms, and
- parking

The land for sale or lease will only be transferred to a sports company which will build a sports hall or health and fitness centre (plus parking) on the site. When the works have been completed, the Council will run the open-air facilities.

Because of the ‘no extra floodlights’ limitation, the Council has noted that the

price of the land on offer will be lower than it might be otherwise. But in fact, the refurbishment will be designed to provide good quality *local* facilities rather than a more intensive and more expensive regional centre. This decision has a side-effect that there may not be so much traffic attracted to the site.

The users of the current Barn Elms have been satisfied that their particular facilities can be fitted in, and maybe enlarged, when the new playing fields are laid out. The Barn Elms Consultation Group has been kept informed all along. Sadly, a couple of institutions which had no booking or payment arrangements with the Council are still disappointed, but Borough-wide athletics had already asked to leave our area (to go to Twickenham). However, there will be a summer grass running track for local school use.

Katie Gent

### NOTE:

The Rocks Lane tennis centre (separate from Barn Elms) has permission for floodlights but is applying for a replacement set. The floodlights currently in use spill considerably more light than they should; modern floodlights ought to be less obtrusive. The new proposals will be looked at very carefully by the Environment Group of the BCA and others.

## Barnes Farmers’ Market – new hours?

The Farmers’ Market has new hours of operation, 10am to 2pm. However, the original planning permission was limited to 12 noon – 4pm, with no setting-up to take place before 11am.

Enquiries have established that no application for revised hours has been received since that original permission. Council planning officers are seeking to regularise the position with those who run the market.

## Proposed changes to Controlled Parking Zones in Barnes

*Prospect* tried to find advance information on how Barnes people have responded to the Council’s summer consultation on CPZs. However, at the time of our copy deadline, Cllr. David Trigg, Cabinet Member for Transport, did not want to prejudice the decision-making process by handing out incomplete details.

The Area Consultation Meeting will be held on 9th October at Barnes Green, 7.30 pm, and *Prospect* will hope to get the full picture from our councillors at that meeting to include in the November issue.

## Police Surgery – use it or lose it

Police Surgeries were set up three years ago as a service to the public to discuss any concerns with the local Safer Neighbourhood Team. They are held in Rose House fortnightly between 5 and 7pm on a Friday. Attendance has been poor, possibly as the time is unsuitable. The SNT would like the community to

suggest a more suitable time. Would during the day be better or Saturday morning when people are out shopping in Barnes? If the community doesn’t support the surgeries we will lose them so, if you have any ideas, please contact Barbara Westmorland at Rose House, 8878 2359.

## Man with a van needed!

For one evening before the Jumble Sale we need a man with a van for transferring items from Lowther Road to Kitson Hall. Please contact Hilary 8878 2359.

# Barnes Workhouse Trust – who are they and what do they do?

This summary of their Annual Report goes some way to explaining its purpose

The Annual Forum and Consultation of the Barnes Workhouse Fund, the local grant-making trust which helps people in Barnes, took place in July at the Barnes Green Centre. Each year, representatives of the Fund's Referral Agencies and beneficiary Organisations are invited to meet the Trustees for an open discussion on the Fund's activities.

Those attending included representatives from the Friends of Barnes Hospital; the Castelnau Centre Project; the Mortlake Community Association; Barnes, Mortlake and East Sheen FiSH; Shenehom Residents' Association Ltd; Richmond Crossroads for Care; Relate of Richmond upon Thames; the Barnes Music Society; Lowther Primary School; Richmond Citizens Advice Bureaux Service; Barnes Methodist Church; the Barnes and Mortlake History Society; Barnes Community Association; Friends of Walsingham Lodge and Viera Gray House. These organisations have all received grants from the Fund.

The meeting heard how several of the beneficiary organisations had progressed during the year and about projects open to Barnes residents which have started or are about to start soon. The Fund's Annual Review, distributed at this Annual Forum, contains a report from the Trustees and a list of grants made.

Special mention was made of Walsingham Lodge and the Berkeley Road bungalows. A happy and comfortable place to live is provided for older Barnes residents here and the Trustees thanked Harrison Housing, the Managing Agents of the Fund, Jackie Taylor, the Scheme Manager, and the Friends of Walsingham Lodge for the parts that they all play.

In addition, Trustees asked that the Fund's Education objective be borne in mind. The Fund can make grants towards supporting a few students through further education. Grants may be awarded for course fees, maintenance, educational equipment, travel costs or child care. These grants are awarded dependent upon the student's personal and family financial situations.

Finally, the importance of bequests was mentioned. Legacies are invested in the Fund's permanent endowment so that the income can be used to benefit Barnes residents in perpetuity.

The Annual Review and the contact details of the organisations listed in this article or in the Annual Review are available from the Clerk to Trustees, Mrs Miranda Ibbetson. The Barnes Workhouse Fund can be found at [www.barnesworkhousefund.org.uk](http://www.barnesworkhousefund.org.uk). Telephone 020 8241 3994, or email [barnesworkhousefund@tiscali.co.uk](mailto:barnesworkhousefund@tiscali.co.uk).

# The Barnes Poor House

The fate of ending up in 'the Poor House' or, as it was later called, 'the Workhouse', brought fear into the hearts of many people in the past. Barnes was no exception, and the 600 or so residents had to pay a special 'workhouse rate' to support the poor penniless unfortunates who had no alternative but to find a place there.

The Barnes Poor House was built on a corner site at the junction of Queen's Ride and the Upper Richmond Road and extended roughly as far as Gypsy Lane. In the earliest building all the paupers – men, women and children – slept in one large room, but seem to have had their own room in the later building or 'tenements.'

Under a bequest in 1758, their position was made clear: 'All the poor on the pension list be sent into this house as soon as possible, to be clothed and fed and kept to labour'. Labour started at 6am to 7pm in summer and 8am to 6pm in winter 'mealtimes excepted'. Neglect of work or service in the house was to be punished by being sent to Bridewell (prison).

Workhouse diet was milk porage (sic), water gruel, broth or bread and beer for breakfast. Dinner was pudding, beef or broth, rice milk or bread and cheese; supper was bread and cheese, 'hasty pudding' or milk porage. Occasionally mutton might be offered instead of beef. Inmates sometimes worked in the garden to raise vegetables to improve their diet. Tea, a luxury, was not available to inmates – only beer.

Work, which included the children, was helping in the house, spinning and, for the younger ones, being sent into the fields 'to scare the birds off the peas.' Emptying the 'privy' was unpopular work so 3lb of beefsteaks were given among the four men who did it 'as well as what spirits and tobacco may be necessary'. Some inmates, including children as young as eight and ten, were sent into domestic service locally.

Despite the benefits, it was a wretched life and the workhouse had the reputation for drunkenness, fighting, general bad behaviour and, in one case, a man was charged with raping a 9-year-old girl.

The Workhouse itself closed in the early 1930s and eventually the parish sold the land for building development. The invested proceeds now fund the Barnes Workhouse Fund, formed in 1961.

Sally Holloway

Our thanks to Maisie Brown and the Barnes, Mortlake and East Sheen History Society for the loan of Margaret L. Butler's history of the Barnes Poor House – 1758–1836 and the picture of the Old Workhouse.



The Old Workhouse on Barnes Common



Barnes Literary Society

## MICHAEL HOLROYD

### 'Six Characters in Flight from an Author' – A Writer's Laboratory Experiment: discussion on a new work on Henry Irving and Ellen Terry

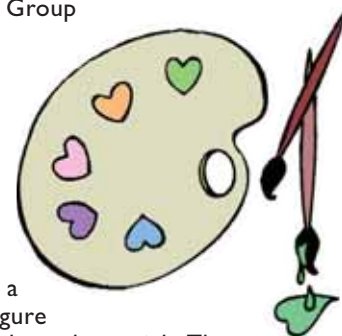
Barnes Literary Society starts its new season with a 'first', when members will have the opportunity to contribute to a 'work in progress'. Michael Holroyd, one of the most influential modern biographers, has invited BLS to be the first audience to participate with feedback on his latest book to be published next year. In 'Six Characters in Flight from an Author', he embarks on a group biography of two families – Ellen Terry and her two children and Henry Irving and his two sons. In this innovative approach to biography he researches theatrical history and uses fact and fiction. He will read a comic and a tragic episode from the lives of his characters and invite comment from the audience.

Michael Holroyd has written biographies of Lytton Strachey, Augustus John and Bernard Shaw as well as two volumes of autobiography, Basil Street Blues and Mosaic. The publication of his biography of Lytton Strachey was hailed as a landmark in contemporary biography and was used as a basis for Christopher Hampton's film *Carrington*. He has been chairman of the Society of Authors and is currently President of the Royal Society of Literature. He was awarded a knighthood in the last New Year's Honours List and is married to the novelist Margaret Drabble.

The event will be held on Wednesday 24th October at 8pm at the OSO by Barnes Pond. For membership details please see [www.barnesliterarysociety.org.uk](http://www.barnesliterarysociety.org.uk) or contact 8748 2558.

## Art for all

The Barnes & Sheen Painting Group starts its winter indoor programme of art classes on October 3rd. These will take place in the hall at the rear of Castelnau Library on alternate Wednesday afternoons from 2pm to 4.30pm. The season ends with the last meeting on April 2nd. The classes will be a mix of still life, portraiture, figure drawing, both clothed and nude, and tutorials. The tutorials on November 14th and February 6th will be on the theme 'Flowers and how best to paint them' and will include exhibits and demonstrations by professional artists. The classes are open to all; anyone interested should contact Derek Pendry on 8876 4865 (phone and fax).



## Harroddian hall

The Harroddian School in Lonsdale Road has made a planning application to build a sports hall on the north-west of their site, close to Windermere Court. The building would be made of reclaimed bricks to mirror the nearby flats and the brick build would be much the same height.

There also would be a mansard-shaped glass roof, which would rise a bit above the height of nearby buildings and, because of the lie of the land, the eastern and western elevations would be partly sunken below ground.

The application can be seen at Castelnau Library and on the web ([www.richmond.gov.uk](http://www.richmond.gov.uk)) The reference number is 07/2886/FUL.

## Flu jabs for Glebe Road Surgery patients

Glebe Road Surgery will be starting flu clinics on **Tuesday 9th October** for their patients who are entitled to a jab.

This includes:

- Anyone aged 65 or over, including patients who will turn 65 before the end of March 2008.
- Patients aged over 6 months who have a serious illness, including: serious heart or respiratory conditions (including asthma if on regular medication), kidney or liver disease, diabetes or lowered immunity due to disease or treatment.
- A resident in a long-stay residential care or nursing home
- A main carer for older or disabled people deemed to be at risk if the carer falls ill.

Please contact the Surgery for times and dates of clinics. Telephone **020 8748 7398** or pop in to 1 Glebe Road SW13 0DR and pick up a leaflet.

## Check your cheques!

A reader has reported that the problem of stolen bank books has appeared in Barnes recently and one resident has reported that £4000 was taken from his account by a thief who stole his new cheque book while it was in the post.

SO – check your cheque book and if you are sent a new one, make sure that a single cheque has not been taken from the middle of the book as well as reporting to your bank if you're expecting a new book and it hasn't arrived.



## Barnes Music Society presents

**Thursday 4th October at 8pm**

**St. Mary's Church, Church Road, Barnes**

Ulrich Heinen (cello) & Robert Markham (piano)

Beethoven: *Cello Sonata in C, Op.102 No.1*

Schubert: *Cello Sonata in A minor, D 821 (Arpeggione)*

Weir: *Unlocked*, for solo cello

Brahms: *Cello Sonata in E minor, Op.38*

**Thursday 25th October at 8pm**

**Methodist Church, Station Road, Barnes**

Sibelius Lecture Recital by Edward Clark

with Kathryn Parry (violin) and Rachel Fuller (piano)

Tickets for non-members at door £10, concessions £8. Further details 07931 730009

# WWT / Nikon Photo Competition 2007



Three acrobatic inhabitants of the Barnes Wetland Centre have won the award of WWT Nikon Junior Photo of the Year for Alexandra Bartle aged 10, who has been a regular visitor to the Centre since her family joined last year. Her mother says that she has been 'a wildlife fanatic since she was a tiny tot' and also seems to have a natural feel for photography, framing her images without needing any guidance.

Alexandra said 'I was so excited when I heard I had won. I saw those three lizards together and I thought they would make a great photo, especially as the angle is slightly different.'

Her photo along with those of the other two LWC winners, Gill Sim and John Counsell, will be entered in the national WWT competition taking place later in the month.

Nikon, who ran the competition, presented each of the winners with a pair of Nikon Travelite EX compact binoculars worth £109.99.

## Barnes halls for hire for social and community events

Around Barnes, nine very different facilities exist for hire, to enable people to get together. These facilities are run separately but all try to work cooperatively.

A leaflet is available from Rose House to help you make choices when you want to organise a meeting, a party or other social event.

For what people think of as major halls, there is an outline picture of each venue but, of course, each place needs to be seen in order to be fully appreciated.

Some detail of individual facilities is given, along with contact details of those in charge of lettings. However, charges, full conditions of hire and detailed hours of availability are not given in the leaflet.

Included in the leaflet are:

### **NORTH BARNES**

Castelnau Community Centre  
Holy Trinity Church & Hall

### **WEST BARNES**

St Michael & All Angels  
Community Centre

### **BARNES VILLAGE**

Kitson Hall (St Mary's)  
Methodist Church and Hall  
Old Sorting Office (OSO)  
Rose House (BCA)  
St Mary's Church  
Barnes Green Centre

Rooms are available for hire at ROSE HOUSE, Headquarters of the Barnes Community Association (BCA), 70 High St, SW 13 9LD. Please note that Rose House is a listed building from 18th Century, and has limited wheelchair access (from the back). However, the hall and kitchenette are modern and well-maintained



### **WHAT IS FOR HIRE AT ROSE HOUSE**

HALL, with small kitchenette, holds maximum 60 people. Audiovisual equipment.

MEETING ROOMS (evening only) for approx. 12 people each.

CONTACT: Julia Bebington 0208 878 2359

## The local newspaper decided NOT to publish this letter!

Dear Sir,

I have been a reader of the *Barnes and Mortlake Times* for more than 30 years, and in that time I have been sad to see fewer and fewer Barnes stories getting the 'front page' treatment. But I never, ever expected to see a picture of Barnes Pond being labelled anywhere in the paper simply as 'ducks on a pond' – 'a' pond indeed!

Anyway, congratulations to commonkeeper Russell Greaves who keeps our Pond so lovely and congratulations to the photographer Tracey Eva Edwards.

Katie Gent





## WHERE ARE THEY NOW?

At a time when the Scout movement is celebrating its centenary, these are some of the earliest Scouts and Cubs of the St Mary's Church group. The photo was sent to us by Mrs Daphne Clark, widow of the first Group Scoutmaster, Ian Clark. The Group would be interested to know what they are doing now. Please send c/o BCA at Rose House or email to [sallyholloway@blueyonder.co.uk](mailto:sallyholloway@blueyonder.co.uk)

The boys include: Bruce Andrews, Ian Lendrum, James Muir, Howard Dimmock, David Miller, Ken ?, John Huston (deceased), Richard Mossip, Richard Hellyar, Roy Mitchard, Peter Black, Stuart Pamment, David Knight, Ian Hill, Michael Cox

## Cook/Chef needed!

The Barnes Green Centre is seeking a cook/chef for their Christmas Day Lunch. For many years the Barnes Community Association has provided lunch for those who would otherwise be on their own on Christmas Day. It is a great opportunity to help the community and have some fun doing it! There are always lots of helpers to provide much needed support but we do need someone to take charge in the kitchen. If you can give of your time and culinary talents on the Day we would certainly love to hear from you – give us a call on 020 8878 2359.

## FiSH 'n' Chats

From 5th October, Rose House will be the venue for a Coffee Corner run by the FiSH neighbourhood voluntary care scheme which works for the whole community. Drop in and see them in the reception room on Fridays between 10.30am and 12.30pm. Perhaps combine it with a visit to the Country Market for a range of home-made goodies!



## Remembering T-Rex and Marc Bolan

Several thousand miles may seem like a long way to travel to visit a tree in Barnes. Not so for a T-Rex fan. On Sunday 16th September, hundreds of T-Rex fans from as far away as Australia, the US, Canada, Sweden and Belgium paid their respects at a tree on Queen's Ride, Barnes, into which T-Rex front man, Marc Bolan, fatally crashed 30 years ago. Despite the large crowds, the mood was peaceful and respectful as fans waited in turn to lay flowers at the shrine to Marc, and pinned messages and remembrances on the tree. After taking photos devotees stood back, some of them for hours, sharing memories under a spell that the rocker had cast over them.

"I wore gold hot pants to his gig in Brighton", giggled a 45-year-old woman. "Well I wrote a poem and almost won

a competition to meet him", replied another. Although they had never met before, many people already knew each other through TAG, the T-Rex Action Group which has over 400 members conversing in forums throughout the year. "I've been friends with all these people for over three years", a girl on her first visit from Sydney told me.

TAG has been holding a series of events over the week, visiting sites of Bolan interest, including his last abode in Putney. "We have to go to another tribute event tonight", a TAG organiser told me. "I'm all Bolan-ed out!" It remains to be seen if such a grand event will ever again be witnessed by the tree in Barnes. Marc's son, Rolan Bolan, said, "I think the 30th anniversary is going to be a perfect tribute in a way to say let the legacy

go, let his music be what he's remembered for".

Rachel Rickard Straus



Memorial Plaque at the site of the tree

## Changing seasons at the London Wetland Centre

As summer draws to a close and the days grow ever shorter, the wintering birds have been arriving in large numbers - shoveler, gadwall, teal and wigeon in particular but also increased numbers of lapwing and snipe. Kingfishers have also been regularly sighted during September.

Meanwhile Teejay and his team are busy switching over from the summer evening barbecues to Sunday **carvery luncheons**, served Sundays from 21st October to 30th March (except 23rd December). These delicious three-course luncheons, with meat or vegetarian options, are served in the beautiful Water's Edge Room overlooking the spectacular wetlands, with a live harpist to set the relaxed mood. Please see full details on the Diary entry.

As part of this year's **National Family Learning Week**, there will be guided explorations of the Centre's wetlands as well as craft workshops on Saturday 13th and Sunday 14th October. For the October half term (20-28 October), there will be further fun for the children to make scary masks and go on a spider hunt. The last weekend of half term they will be able to meet some of the Centre's most misunderstood 'creepy creatures', starring real bugs.

In addition to the daily tours around the Centre, one of the wardens conducts a walk at weekends to further explain ongoing conservation work and to answer any questions about the Centre and its wildlife. For aspiring birdwatchers or those who want to improve their 'spotting' skills, the practical introductory **birdwatching course** will help you identify different birds and understand more about their behaviour. An experienced birdwatcher is in the Peacock Tower on Tuesdays and Thursdays to help with identification.

**Wildlife photographer Iain Green** will give a talk on Sunday 21st October, about his ten-year photographic study of one population of wild tigers and the jungles of Bandhavgarh where they live. Iain specialises in the wildlife of the UK and India and his photographs are often used to illustrate conservation and animal protection issues. He is also author of *Wild London, The Nature of a Capital* (2005).

The new Events leaflet covering October – March is now available from Rose House or the Centre.



Tiger Climbing Down Rocks by kind permission of Iain Green

## A personal viewpoint on the future of Barnes.....

Nobody passing through the streets of Barnes can fail to notice the invasion from fleets of skips and diggers of cellars, to cranes opening up roof spaces – not to mention the swimming pools and quite large ‘garden sheds’ blossoming in back gardens.

But is it fundamentally changing the face of Barnes?

Already, we understand, a large part of the area immediately behind the shops on both sides of the High Street has been bought by developers over the years. The Council has turned down the latest application for a very high density block of flats, with shops and a restaurant on the small site of the old garage behind the cleaners.

Now a new scheme has been submitted for planning permission from a group which includes the Richmond Housing Partnership (who are responsible for what was formerly Council housing in Barnes). This presumes that at least part of the housing planned will be at reasonable rents.

The area for development is around the Coach and Horses and Claridge House (the old building close to the ‘Coach’).

Whether this scheme is considered agreeable – or not – by local people depends on closer viewing of the plans but, that said, we must not be ‘NIMBYs’, automatically dismissing any development in the village. This would weaken our credibility in any future planning battle.

Like it or not, the High Street has got to change but change for the better, in order to update but preserve the ‘village’ atmosphere as much as possible. This is what makes Barnes unique in suburban London.

The BCA Environment Group is already keeping a close watch on this new venture and it’s up to us all to do the same. If the BCA needs support in any forthcoming development – for or against – it would expect knowledgeable support (as it had in the past fighting the motorway through the village and the across the Common or supporting the restoration of the pond.)

Obviously the old village cannot stay in its present state for ever but it is the responsibility of all local residents to view the plans of each scheme and to make our views, whatever they are, known to the Council. In numbers lies strength!

Having said that, the Farmers’ Market is causing some concern with its proposal to extend its hours to open earlier on Saturday mornings.

The Market was set up originally at a time when the farmers of this country were facing a crisis and was supposed to be restricted (in this part of the country) to farms within 50 miles of London.

It now has stalls selling meat from outside that range, as well as Italian and Swiss cheeses, Middle Eastern delicacies including olives and other items which cannot fall within its original parameters. This is already hitting our High Street traders – who have to pay heavy rates and charges for merely existing and before they begin to make a profit. Gary, the greengrocer, said one of the causes of his closure was that Saturdays were the only day that crowds of customers came – and these decreased as they were tempted away by the Market. When he left and the Post Office closed, other shops suffered from lack of Saturday customers. The Cheese Shop has been affected too.

If our shops are to keep open all the week – for the sake, particularly, of young mums or the elderly who have no constant access to supermarkets, they must, surely, be allowed to profit from the Saturday shoppers who are currently deflected to the Market – jolly meeting place though it is!

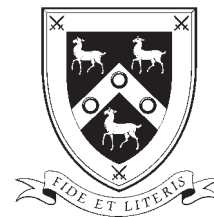
Like the planning of the High Street, it’s not only the work of the BCA but the whole of Barnes to keep a constant eye on this unique part of London and make sure that all our voices are heard in support of – or opposition to – events in the future.

*Sally Holloway, long-time Barnes resident.*



*The circular stained glass window in St Osmund's church, in which a phoenix rises from the rosy flames, is an example of the work of local artist and artisan Eric Cooper. His life and work is soon to be featured in Prospect*

## Music at St Paul's School



Where can you find prestigious musicians and actors in a top venue, raked seats and perfect acoustics without bothering with travelling and paying top prices for tickets?

Music at St Paul's offers all these – in Barnes.

Tickets for Emma Kirby on October 4th sold out and the others will be selling fast. Local star Niamh Cusack ends the season in May with Prokofiev's *Peter and the Wolf*. Other artists include Jacqui Dankworth with a performance of classic and contemporary jazz.

Contact: 020 8746 5338 for more details.

## Luxury birdwatching by appointment



Looking for a unique present for someone? Fancy improving your own bird watching skills? Then why not book a one-to-one session with your own personal bird watching trainer? Packages tailored to your exact requirements, from one hour to full day sessions. First hour costs £45, second hour £25 and any subsequent hours at £20. Call 020 8409 4400 for details.