



Prospect

October 2008

Price when sold £1

BCA Jumble Sale

Beat the credit crunch and stock up on books, electrical goods, toys, excellent bric-à-brac, etc at the BCA Jumble Sale. This year's sale will take place on Friday 10th October (7-9pm) and Saturday 11th October (10am-2pm).

We also need good jumble – so have a seasonal clear out and bring your unwanted items to Kitson Hall on Thursday 9th October, 10am-noon, 2-4pm or 7-9pm or if you need something collected, phone 8748 8972 or 8878 2359 after 1st October.

Electrical goods: Due to illness in the family and loss of storage space, Bob Glover asks that electrical goods be delivered as follows:

1. to the Scout Hut on Queen Elizabeth Walk between Thursday 2nd October and

Tuesday 7th October; the Scout Hut will be open from 10am-noon and 2- 4pm 2. or, to Kitson Hall on Wednesday 8th October (evening) or Thursday 9th October.

Please do NOT deliver items to Bob's home address!

Please note that we are unable to accept electrical goods ahead of these times, but to facilitate testing please do not leave it to the last minute. Call 8748 7050 with any queries regarding electrical goods.

We are always desperate for helpers so if you could manage a couple of hours please ring Hilary at the BCA on 8878 2359.

PLEASE – NO JUMBLE AFTER THURSDAY 9th OCTOBER

Barnes Fair 2009 – can you help?

We are looking for volunteers to help organise next year's Barnes Fair. If you have an interest in **ADVERTISING, MARKETING** or **PR**, then we'd particularly like your help in putting together the BCA Fair Programme. Previous experience, whilst welcomed, is not absolutely necessary as long as you are open-minded and enthusiastic. Work can be done from home (we cover expenses), the hours are flexible and it's worthwhile – and good

fun! Tempted? For further details, please call Charlotte on 8748 5898 or email csharpeneal@yahoo.co.uk.

We are also looking for someone to help run the **BCA TOMBOLA STALL** and, with some administrative help, we'd love to reintroduce the **FANCY DRESS** competition as well.

If you have some spare time and fancy a new challenge, then do get in touch. Thank you.

Returning Olympian



Sarah Webb, double Olympic Gold Medallist (Athens and Beijing for Yngling) returns to her home in Beverley Gardens, to a warm welcome from her neighbours

Planning update

In March, the BCA put out a wake-up call, drawing attention to threats of development on a number of backland sites behind High Street. Subsequently, *Prospect* gave details of two developments which, in response to local opposition, now have a limited scale and may give some improvement to the street scene.

However, on the largest site of the three, from Stanton Road to Liffords Place, the threat of over-development and inappropriately high buildings remains.

The Council have done some work in preparation for drawing up a Planning Brief for the site. This could indicate the least-worst traffic layout, the different limits to heights at different parts of the site, the uses that would be encouraged or discouraged, etc. *Prospect* hopes to learn more next month and will continue to give it front page emphasis.

Katie Gent

Cook needed....

Every Christmas the BCA provides lunch for those in Barnes who would otherwise be by themselves on Christmas Day. This year we are looking for a cook to help us. We provide a full traditional dinner of turkey and all the trimmings but most of the food is prepared in advance and, on Christmas Day, the main job is putting the food in the ovens. We are a jolly team and have a lot of fun so if you think you could help please contact Hilary at the BCA on 8878 2359.

**B
C
A**



matters...

Environment Group Report	p2
Volunteer Needed	p2
Retail Champion for Barnes	p3
Friends of Le Pecq	p3



Hammersmith Bus Station

I have not been able to organise a public meeting with TFL. It is proving so difficult to find anyone who is actually responsible for the Bus Station!

Barnes Vision

There is still no news whether LBRuT will adopt the Barnes Vision proposal.

Towpath Management

This winter the PLA will be clearing trees from the revetments banks on both sides of the river, and the Environment Group has contributed to the Wooded Towpath Audit. As everybody who enjoys the towpath knows, the Wooded Towpath is very important.

As part of the Proposed Management Plan for Thames Strategy Kew to Chelsea,

assistance of various independent tree specialists also contributed to the Wooded Towpath Audit. They are at present compiling a broad-ranging survey of the wooded vegetation that occurs on either side of the towpath from Putney through Barnes on to Kew. A large and nationally significant population of Black Poplars (*Populus nigra* var. *betulifolia*) has been found. In total there are forty-three trees, of which twenty-one are female. This is significant because there are estimated to be around only 7,000 trees left in the UK, of which some 600 are female. To have a large population in one small area, with such a large proportion of female trees, is very rare indeed. Most of the trees are growing at the top of the revetment and there are others on the landward side of the walking path. Individual trees are now being mapped using a global positioning system (GPS) and satellite imagery. Maps will be available shortly. Nationally there are forty-three biodiversity action plans for the Black

Poplar and on the basis of new discoveries, this species will feature in the next version of the Biodiversity Action Plan for Richmond.

The Ash (*Fraxinus excelsior*) and field maple (*Acer campestre*) are rare in the borough and throughout greater London and the SE in general. Its preservation is important. On the Wooded Towpath, Field Maples are located on the river side of the path, directly above the revetment, mostly on flat ground in earth (NOT out of the revetment itself or the path). Field Maple and Ash-field Maple will be part of the Towpath Maintenance Plan and care should be taken during the revetment clearances. It is easy to confuse the field maple, a native tree, with Sycamore (*Acer pseudoplatanus*) an aggressive, introduced species.

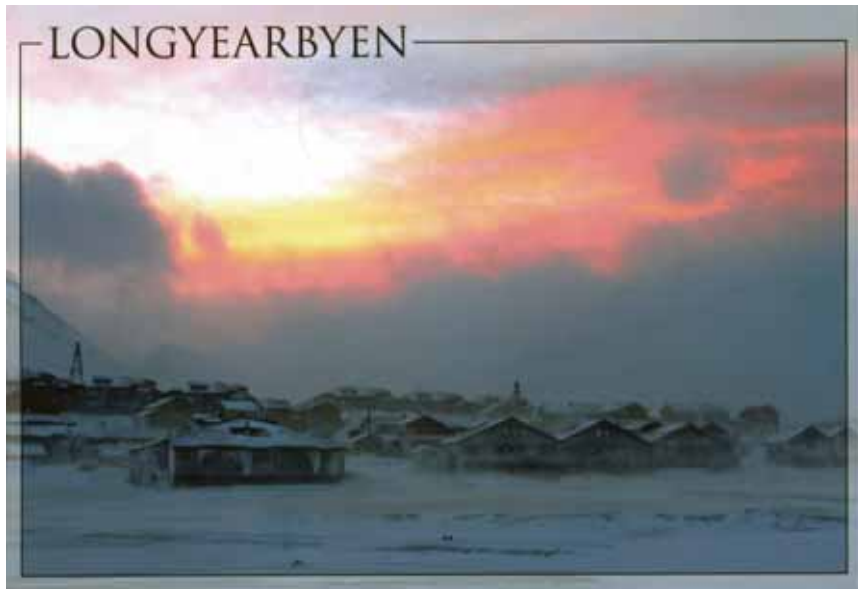
I thought the above, which I have taken from a very detailed report, would interest everybody who enjoys the Wooded Towpath.

Susan Boyd

Comments by 8th October – Farmers' Market hours

Comments on Farmer's Market proposed new hours **due by 8th October**: Customers 10-2pm and Stallholders 9-3. Comment to Richmond Council by post or online via <http://idoxwam.richmond.gov.uk/WAM/showCaseFile.do?&appNumber=08/2757/FUL>

Greetings from the Arctic



Many of you will remember our story about Cecily Henderson, who was raising money to participate in an expedition to the Arctic to monitor the effects of global warming on the glaciers. She has very kindly sent us this postcard!

'Greetings from Svalbard. At the moment I am on a glacier called [?] in a tent in a complete whiteout. I've been in the tent for 24 hrs and the conditions don't seem to be improving so I may be here for a while! We have been on the glacier for 5 days and we have been doing a lot of science. Every night we put bamboo poles in the snow with a line at ground level and in the morning we can measure how much snow has melted. The maximum has been 3cm in 12 hrs but a lot of this is due to the fact that it's summer. We also do met obs every hour, which include measurements like cloud cover, temperature, etc.

Thanks again [BCA] for all your help in making this possible. Cecily'

No plastic bags please!

There is increasing interest in the country to curb the issuing of plastic bags by retailers. This summer, our neighbours in Kew launched a plastic bag-free village. We would like to do the same in Barnes. The BCA would lead this initiative but would appreciate help from the community. If you would like to join the 'no plastic bags' team please contact Isobel Woolf on 8748 9532 or isobel.woolf@btinternet.com

Volunteer needed once a month

We are looking for two batch deliverers for *Prospect*, one to cover Parke Road, Cumberland Road and Lowther Road and another to do Madrid Road, Elm Grove Road and Ranelagh Avenue. All we need is someone to drop bags off to the distributors (3 in each batch) – not for delivering copies house to house. Perhaps someone brave could do both! Contact Julia at Rose House 020 8878 2359

Area Consultation Meeting

Thursday, 9th October at 7.30pm

BARNES GREEN CENTRE

Come and meet your local councillors and tell them what you think. This is the time of year when the two wards of 'Barnes' and 'Mortlake and Barnes Common' (which cover all the area that we call Barnes) have a joint meeting

Flu clinics for Glebe Road Surgery patients

Glebe Road Surgery has contacted *Prospect* to give the following reminder to its patients:

"We are fast approaching that time of year when we invite those of you who are entitled to **free flu vaccination** to come to the surgery.

We continue to strongly advise that, due to your medical history and/or age, you **PROTECT** yourself. We urge you, even if in previous years you have declined, to please reconsider vaccination.

Flu can be debilitating and serious in older people and we know from experience that people with conditions such as **ASTHMA** (on current medication), **DIABETES**, **LUNG**, **KIDNEY**, **HEART AND LIVER DISEASE** are at much greater risk from the complications of flu. We cannot encourage you enough to take up this offer and strongly recommend you attend for vaccination. It is a myth that this vaccination can give you flu.

Please find below a list of clinic dates. These will be walk-in clinics; no appointment will be necessary. If you are unable to keep to these allocated clinics or to visit the surgery, please contact Reception so that alternative arrangements can be made for you."

FLU CLINICS AT GLEBE ROAD SURGERY

MONDAY October 13th, 20th, 27th, November 3rd 5pm-7.30pm

TUESDAY October 14th, 21st, 28th, November 4th 7.30am-11am, 2.30pm-5.30pm

FRIDAY October 17th, 24th, 31st, November 7th 9am-11am

If you are not a patient of Glebe Road Surgery then please contact your GP as the same advice applies to all who are eligible for free flu vaccination.

WANTED

RETAIL CHAMPION FOR BARNES

Part-time position, to be funded by the BCA and Richmond Council (subject to Council approval)

Can you help maintain the character of Barnes, with its small, independent shops?

The BCA wishes to appoint an individual to champion the cause of retail businesses across Barnes – covering North Barnes, High Street, Church Road, Station Road and White Hart Lane.

Circa £7,500 p.a. (plus expenses), estimated 10-15 hours/week

The Job

- Reporting to a small team at the BCA, you will:
- Develop a database of existing Barnes retailers
- Meet regularly with retailers to understand their concerns
- Help address these concerns, acting as a link between retailers, Council planners, developers, police and community organisations
- Help establish a better trading environment for small shops
- Help improve the retail mix to meet local consumer needs

The Ideal Candidate

You will:

- Probably live locally
- Have good lobbying and communication skills
- Have a good working knowledge of local retail issues
- Have the drive and tenacity to chase up issues until they are resolved

Further Information

- This is not a desk job! You will work from home and you will need to meet with retailers at the shops
- The appointment shall be through a contract for services with the BCA. You will not become an employee of the BCA
- The contract will be subject to Richmond Council approval of matched funding with the BCA
- For more information, or to express interest, please contact Julia Bebington at the BCA on 020 8878 2359

Local heroine is Carer of the Year



Elizabeth with her national trophy and regional commendation

Entered for the award by her colleagues, Elizabeth Nurse, who works for Anchor Trust, first topped 357 other nominations to win the region's Carer of the Year title before being awarded the Anchor Care Services¹ national trophy in July.

Elizabeth, who was born in Barbados, has lived in Cleveland Gardens since 1974 and has provided nursing and domestic help to patients in their homes as far away as Richmond for over twenty years. "I've always been comfortable in the company of older people. An award makes you strive to do even better; I suppose, but I do my job because I love it", says this angel of the community.

She is always cheerful; her neighbours are familiar with her little old car setting off day and night in all weathers on her various missions, but there was nothing to indicate the courage she would show in an emergency. On arrival at the home of an elderly lady she discovered the carpets alight (from a discarded cigarette it later transpired). Smoke was already billowing round the room so Elizabeth grabbed her coat collar to cover her nose and, braving further danger from the spreading flames, she steadfastly brought the lady to safety.

Elizabeth suffers from asthma and knew the risks of smoke inhalation. Both she and her patient required oxygen as soon as the emergency services arrived. A fireman believed that the lady would have died in another few minutes had she not been rescued. How many of us would have acted so coolly rather than hide behind the Health and Safety mantras? Elizabeth Nurse is that old fashioned thing, an unassuming heroine.

William Mortimer

¹ Anchor Care offers home care services to older and disabled people needing personal care or domestic help in order to continue living in their own home.



Friends of Le Pecq

We will be welcoming a group from Le Pecq during the weekend of 8th-9th November. Amongst those attending will be the Mayor of Le Pecq, who will be participating in the Remembrance Day service at St Mary's. A programme of activities will be put together when we know more about who will be coming and who, in Barnes, wishes to be involved.

If you would like to know what is happening, or are able to offer accommodation, please contact me at mhspillane@hotmail.com or via Rose House.

Mike Spillane

Protecting our very uncommon Common

There's no doubt, our Common is one of the great joys of living in Barnes. Just step over that Beverley Brook footbridge and you are in another world – a wilder landscape with an uplifting sense of being deep in the country. Even criss-crossed by roads and a railway line, Barnes Common retains its character of open Surrey heathland. So when the **Friends of Barnes Common** get down to drafting a new eight-year management plan, it aims to keep that wild aspect, and even enhance its already amazing biodiversity.

The Friends first got to work in 1993, after the Common had been designated a Local Nature Reserve. Management was urgently needed, especially to restore areas of increasingly rare acid grassland. For centuries the Common had been kept open by grazing, but now bracken, scrub and saplings were taking over. Acid grass is now recognised as an important habitat, home to a staggering variety of bees, wasps, spiders and birds that feed or nest in its grasses. We may think of our Common as a marvellous spot for a quiet stroll, but it is truly a wildlife haven of great importance.

Same Strategy – updated management plan

Responsibility for managing the Common formally lies with Richmond Council, but with a long list of open spaces in their care it's understandable that they are happy to be guided by local expertise in managing an area as sensitive as Barnes Common. So the Friends have drafted an updated management plan for their approval. It sets out twelve objectives, with a programme for achieving each one. Top of the list, it aims to restore a further one hectare of acid grassland by 2012. Although this will only affect some two per cent of the Common area and mainly involve clearing bramble and bracken from grassland edges, it can restore our acid grassland by as much as 20 per cent. Thus we make a worthwhile contribution to London targets, with work that will leave the Common virtually unchanged. The restoration of 1.5 hectares of true heathland is objective two, and the Friends have already carried out heather trials in four locations to see how seeding and planting can bring this about.

Objective three relates to another Friends' initiative that adds even more variety to Common habitats by creating a small reed bed by the banks of Beverley Brook. Already approved and funded, it will provide living space for damselflies, frogs and toads as well as small birds, and form a valuable link in the wetland corridor that follows the brook. Woodland management is the theme of objective four, looking at several areas and especially the trees that screen along the borders and the main Common roads. Here, management would aim to remove non-native trees and plant or retain native species like Black Poplar,



Black Poplar

Willow and Crab Apple, along with the Oak and Birch which dominate.

Other objectives cover mowing of sports fields and amenity meadows, prevention of abuse, barriers against parking and fly tipping on Common verges, and security issues – improvements to the formal paths and measures to eliminate all 'no-go' areas and illegal activities. The final objective tackles 'eutrophication' or over-enrichment of the acid grass. Dog-mess is the prime culprit here, aggravated by the current boom in professional dog walking – another issue for the Friends of Barnes Common to take up. The Friends resist frequent demands to put up extra signage, and constantly remind that this is a Common, not an urban park.

Members also organise botanical and nature walks and bat evenings and like to share their knowledge of the Common.

Adding land to the Common

Conservation is only one aspect of the work. Planning issues also arise – the most significant deciding the fate of the old goods yard by Barnes Station. Ever since rail use ended and it passed into the hands of private developers, the Friends have been resisting harmful schemes for this area, taken out of the Common in the 19th century. Housing, a vast health centre and a public transport interchange have all threatened and been thrown out. Vigorous campaigning has now led to a proposal which aims to return much of the site to Common, with enabling housing only to pay for restoration. A better scheme altogether, but still we need to keep vigilant, especially to ensure that the restored land keeps the character of a wild Common.

It's only a tiny patch of green on the London map, but safeguarding Barnes Common is a big job. To help us protect our very uncommon Common, come along to one of our conservation work parties or become a member of the Friends – contact treasurer Martin Conway on 8392 2566, or e-mail info@barnescommon.org.uk for a membership form or more information.

David Sharp



Barnes Literary Society

Michael Frayn and Christopher Cook in Conversation

The Barnes Literary Society opens its fifth season with playwright and novelist Michael Frayn who will talk informally about his latest publication, *Stage Directions*.

Many of his plays, from his first major play, *Alphabetical Order*, his international hit, *Noises Off*, to the more recent drama, *Democracy*, have exposed the dividing line between order and chaos. His successful career has won him many awards both for plays and novels. He was shortlisted for the Booker Prize for Fiction for his novel *Headlong*, and won The Whitbread Novel Award for *Spies*. His latest play, *Afterlife*, was recently performed at the National Theatre. *Stage Directions* covers the range of his theatrical writing and offers an illuminating insight into his work.

Michael Frayn will be in conversation with writer and broadcaster Christopher Cook who broadcasts regularly on BBC Radios 3, 4 and 5. Christopher was Artistic Director of the Cheltenham Festival of Literature in 2004. He regularly interviews the stars of the Royal Opera House and has been in discussion with Michael Frayn at a previous literary event. Their conversation will cover aspects of his writing, how he came to write plays, and the nature of theatre. For more information please follow the links at www.barnesliterarysociety.org/next-event.htm.

This event will be held on Wednesday 15th October in the Methodist Church by Barnes Pond at 8pm. For membership details please contact 8748 2558 or see www.barnesliterarysociety.org.uk.

Yoga at Rose House

Take some time out to ease the stress of urban life. Nourish and rejuvenate at a deep level with gentle and restorative yoga postures using props like blocks and blankets. This enables deep relaxation and restores balance to the nervous system, improves digestion and quiets the adrenal glands which pump the stress hormones. And you are wakening up your spine to keep aches and pains away. De-stress and rejuvenate with Sabine's yoga in Rose House on Wednesdays from 10.00-11.30am (drop-in class, beginners welcome, £8 per session)

Iyengar trained, Sabine's influences include Vinyasa, Jivamukti and Yin Yang Yoga.

Jess is offering an additional class on Wednesdays 1.30-2.30pm and is looking for more people to join for the afternoon session. Call 020 8878 2359 for information or to join either session.

Bright embers of community at the Oddfellows Social Club

What is in a name? Of several theories about the origin of the name Oddfellows, the most popular is that 'fellow' was a term commonly used to describe men of the same trade, but where an insufficient number of 'fellows' precluded formation of a dedicated Trade Guild, other guilds formed from workers in an assortment of trades used the term 'Oddfellows'.

The Oddfellows began in the City of London in the late 17th century and today the Grand Lodge of England owns the properties in which both Lodges and Social Clubs meet. Originally formed to help protect and care for members, both men and women, at a time without trade unions, welfare state or National Health Service, the tradition of helping people continues to the present day.

Established in the early 1920s, the 'Loyal Earl of Lonsdale' Social Club at No.12 Westfields Avenue, rents its premises from the Grand Lodge and has social rather than Lodge status. Committees of Management (mostly enthusiastic volunteers) look after the day to day running of Social Clubs, ensuring that the Club is run efficiently, prudently, and in line with the expectations of the Society.



Members embark on an outing to Worthing in 1925 – does anybody recognise a grandparent or know if Ruffell's garage in White Hart Lane provided the charabanc?

Graham Reynolds, born in White Hart Lane in 1955, has been Secretary of the local club for the past seven years. Following the loss of members of his mother's age, who had raised their families in the area, recovery was essential; new members have applied their skills to



Pam Butler and Graham behind the bar

renovate the club premises, including provision for disabled members, and giving it a fresh interior décor. "If work is needed on your home our members provide a pool of local expertise; forget the Yellow Pages and come down to the club", says Graham.

A range of activities attractive to families has been established and children are welcome with their parents after 6pm on weekdays and at weekends. Four parties for children, including a Christmas Party with Santa, are spread throughout the year. At all the events there are games and prizes to be won. There are also fund-raising activities, principally in recent time for Macmillan Nurses, which received over £2000 as a result of the 'Snooker Marathon' where play at the club continued non-stop for twenty-four hours. Members are able to hire the hall at any time for family occasions at preferential rates – Graham's mother enjoyed her 90th birthday party here. Styled much like the lounge bar of a pub, the premises are available on weekdays for public hire from 9am to 1pm and are suitable for rehearsals, society meetings, clubs and special interest groups.

In addition to snooker, the members enjoy darts, golf and the sport of kings, horse racing, with regular outings to Sandown Park and Goodwood. The sweepstake in Cheltenham week is worth £150 to the winner for a £10 outlay. Each individual backs his 'fancy' in every race. Based on weighted first-, second- and third-place points the member with the highest total is the winner.

If you are interested in joining, call 0208 876 5511 after 1pm almost any day of the year or write asking for an application form to the postal address above (postcode SW13 0AU)). You are sure of a warm welcome.

William Mortimer

Tim to talk

Barnes resident, Sir Tim Rice, will be guest speaker at the first of a series of celebrity lectures planned by the Barnes and Mortlake History Society. The aim is to provide a platform for the best-known local residents who have something interesting to say about their life and times – and, of course, how they came to live in the district. Sir Tim Rice will speak at the Kitson Hall on Wednesday, 5th November, at 8pm under the title *Barnes and Beyond*.

Admission will be by ticket for both BMHS members and visitors, with a charge of £5. A glass of wine will be served. All profits will help buy a new digital projector to replace the Society's ageing equipment.

Tickets are available from BMHS Secretary Helen Deaton, 9 Parliament Mews, Thames Bank, Mortlake, SW14 7QP. Please send a stamped addressed envelope. As Kitson Hall has a capacity of only 200, the evening is expected to be sold out quickly.

A note on Barnes and Mortlake History Society

Barnes and Mortlake History Society was founded in 1955 with the aim of 'promoting the advancement of the education of the public by the study of local history in the ancient parishes of Barnes and Mortlake'. Fifty-three years on these aims are still the core of the Society.

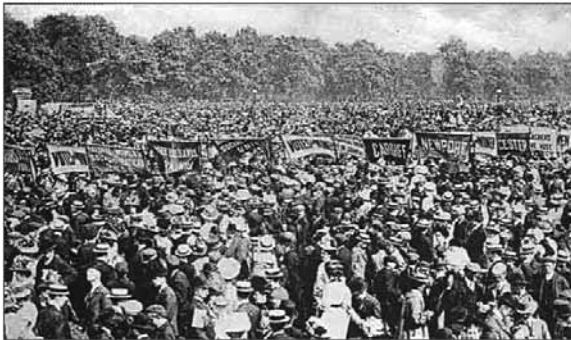
The current membership of 424 enjoy a newsletter four times a year, a varied programme of lectures during the winter months and two outings in the summer. Local history publications, cards and prints stem from an enthusiastic band of volunteers and researchers.

The Society is delighted to welcome visitors and new members, either at the lectures on the third Thursday of the month or by contacting Jean Porter, Chairman, on 020 8392 8505. The website is www.barnes-history.org.uk.

Women's Sunday Suffragette Centenary



On 21st June 1908 thousands of women from all over Britain processed to Hyde Park carrying banners demanding *Votes for Women*. The crowd of demonstrators and spectators numbered in excess of 300,000 according to conservative estimates at the time. The day became known as *Women's Sunday*. This was the first major public occasion when the suffragette colours, purple, white and green, were introduced.



Among the determined demonstrators were women who would become members of Soroptimist International founded in 1921, a women's volunteer organisation dedicated to service to the local, and world, community. One such was Ernestine Mills who carried banner number nine in the Kensington contingent.

This summer, Greater London Soroptimists paid tribute to their illustrious antecedents with a low-key centenary re-enactment of the Women's Sunday rally in Hyde Park.



Member Irene Cockroft – local author of *New Dawn Women: Women in the Arts & Crafts and Suffrage Movements at the Dawn of the 20th Century* and great-niece of Suffrage artist Ernestine Mills – wore suffragette costume to mark the occasion.

Irene's book, *New Dawn Women*, is available at £10 from Barnes Bookshop in Church Road. For postal orders phone Irene on 020 8748 5117.

Note: *Women's Sunday 1908* original programme from author's collection



Barnes Music Society 2008-2009 Season of Concerts

Membership: Adults – £40; Children up to 18 & full-time students – £18; Family – £80 (2 adults & their children up to 18 years old)
Non-members: tickets at the door: Adults £10, Concessions £8.

Thu 9 Oct 2008 at 8pm, Methodist Church:
Pei-Sian Ng cello, Miyako Machida piano

Beethoven *12 Variations on a theme "Ein Madchen oder Weibchen", Op.66*
Webern *Drei Kleine Stucke*
Martinu *Cello Sonata No.3*
Prokofiev *Cello Sonata in C, Op.119*
Martinu *Variations on a theme of Rossini for cello & piano*

Wed 29 Oct 2008 at 8pm, Methodist Church: Harpham Quartet

Haydn *String Quartet in C, Op.33 No.3 "The Bird"*
Debussy *String Quartet in G minor, Op.10*
Sibelius *String Quartet in D minor, Op.56 "Voces Intimae"*

Wed 3 Dec 2008 at 8pm, Methodist Hall:
Jessica Chan piano

Beethoven *Sonata in A flat, Op.110*
Bridg *Four Characteristic Pieces*
Bridg *Dramatic Fantasia*
Debussy *Images, Book 1*
Prokofiev *Three Sarcasms, Op.17*
Bach/Busoni *Chaconne in D minor (from Partita, BWV.1004)*

Wed 21 Jan 2009 at 8pm, Methodist Church: Lilian Papadopoulos: Songs from the Shows

Thu 12 Feb 2009 at 8pm, St Mary's Church:
Sara Trickey violin Tom Poster piano
Schubert *Violin Sonata No.3 in G minor, D.408*

David Matthews *Adonis, Op.105*
Dvorak *Four Romantic Pieces, Op.75*
Elgar *Sonata in E minor, Op.82*
Kreisler *Viennese Rhapsodic Fantasia*

Wed 18 Mar 2009 at 8pm, Methodist Church: Bradbury Trio: John Bradbury clarinet, Adrian Bradbury cello & James Cryer piano

Programme includes:
Brahms *Trio in A minor, Op.114 for clarinet, cello & piano*

Concerts for Children:

Children - Free. Adults - £5

Sat 4 Oct 2008 at 5.15pm, Methodist Church: Alan Roberts percussion

Alan has always been a popular performer at these children's concerts. He returns with an exciting performance on a variety of percussion instruments from all over the world. He also makes sure that every child 'has a go'.

Sat 8 Nov 2008 at 5.15pm, Old Sorting Office: Fontanella Recorder Quartet

A celebration of the recorder family in all its shapes and sizes, introducing children to the full

scope and fun of recorder playing as you've never heard it before, with music ranging from early times right through to their own arrangements of jazz classics and TV themes.
Sat 17 Jan 2009 at 5.15pm, Old Sorting Office: Fiona Huggett and Friends
Fiona is a well known local professional violinist and teacher presenting a light-hearted introduction to the string quartet. Her programme is specially devised to appeal to young children through the performance of well known classics and favourites.
Children's concerts last approximately one hour.



Miyako Machida (piano) and Pei-Sian Ng (cello) perform the 9th October concert

Barnes welcomes Dr Ebute Obiabo, the new minister at Barnes Methodist Church

The new minister at Barnes Methodist Church, Dr Ebute Obiabo, is a Biblical scholar. He hails from Nigeria, although he has lived in the UK for the last 20 years.

In 1980 he embarked on translating the whole Bible from Hebrew and Greek into his own language, Idoma, spoken by the Idoma people in the Benue state of Nigeria, and he hopes that his translation will shortly be published.

Ebute trained originally in Theological Studies in Ibadan and Ilorin in Nigeria. In 1988 he and his family came to Britain where at Queen's University, Belfast, he read for a Bachelor of Divinity and an MA in Semetics (in case you don't know, that's a study of the Hebrew texts of Exodus). In 1995 the family moved from Belfast to Edinburgh where he did a doctorate in Philosophy and Divinity. Seven and a half years later, in 2002, he left Scotland with his wife Ene, who is now a midwife at Queen Charlotte's Hospital, and their children and moved to London where they lived in Battersea and where he worked with the Battersea Mission, the Clapham Church of the Nazarene and also with the Battersea Riverside group of Churches Together.

In 2005 the family moved again, this time to Luton where Ebute worked in the Luton Methodist Circuit. He also had more time to concentrate on his translation of the Bible.

Now he has come to live in Barnes where, in addition to Barnes Methodist Church, he will also have responsibility for the Methodist churches in Brentford and Chiswick.

We wish him and his family a very warm welcome!

Susan Gibson

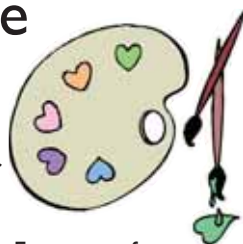


The Music Makers For My True Love at St Mary's

After their successful concert in 2006, the talented a cappella choir The Music Makers return to St Mary's Barnes on Saturday 4th October at 7.30 pm. Under their new musical director, Peter Asprey, a rising star as a conductor, they will be performing a varied selection of sacred and secular choral music on the theme of love and devotion under the title For My True Love. Proceeds are in aid of The Friends of St Mary's Barnes. Tickets are £10 (£8 concessions) from 020 8741 5422 or office@stmarybarnes.org.

Painting for pleasure

Sadly the sun didn't shine on all the outdoor gatherings of the Barnes and Sheen Painting Group this summer, but the forthcoming winter programme will be held in the warmth and shelter of the hall at the rear of Castelnau Library. Meetings will take place on alternate Wednesday afternoons from 2-4.30pm starting on 1st October. Everyone, of whatever standard, is welcome to the group, but places are limited so early application to Derek Pendry on 8876 4865 is advised. The charge for the whole period October to April will be £25, representing a modest £1.92 a session. The planned programme is as follows:



October 1st	Still Life
October 15th	Model (male nude)
October 29th	Still Life
November 12th	Demo and Tutorial by Judith Scully
November 26th	Model (female nude with drapes)
December 10th	Still Life
January 7th	Still Life
January 21st	Model (male nude)
February 4th	Demo and Tutorial by Jill Storey
February 18th	Still Life
March 4th	Portrait
March 18th	Model (female nude)
April 1st	Still Life

The Friends of Queen Mary's Hospital Roehampton

invite you to

BRIDGE AND AFTERNOON TEA with raffle and prizes

on

Thursday 30th October 2008

at

**Roehampton Club, Roehampton Lane,
London SW15 5LR**

from 2.00-5.00pm £60 per table

For further details on how to reserve a table please contact:

Linda Dalling, 22 Shottfield Avenue, London SW14 8EA

Tel: 020 8876 1034 or The Friends office 020 8487 6798



**Cancer of Unknown
Primary (CUP)
Foundation**

LUXURY WINTER FAIR

Saturday 1st November

10am-5pm

Kitson Hall (behind St Mary's Church), Barnes

Come & do your Christmas shopping early!

All enquiries to Lorna on 020 8392 0632

info@plumandivory.co.uk

Readers' letters

Dear Editor,

World-wide financial turbulence might make one assume that the question of Heathrow expansion has been put on the back burner. But it has not: a Government decision is expected in November/December. In the circumstances, there is one point that I want to draw to people's attention while there is still time to send comments.

When the consultation began, most people thought they were being asked whether they would like a new runway and/or a revised flight procedure designed to fit more planes into the day. It was a question quite easy for the man-in-the-street to answer. In fact, the Government asked something different and essentially technical. It reminded us that they decided in 2002 that a third runway should be built, once problems of air/noise pollution had been resolved. The question was: *We are committed to expand Heathrow. Do you think the technical problems have now been resolved?* My answer to that has to be *How on earth can we laymen know?*

The professional answer is based on consideration of what *mix* of planes – large, small, clean, pretty dirty, new, old, in the pipeline – will be around in a few years' time. But there is a big snag: overall, planes will only be clean enough for Heathrow expansion if one includes in the mix a new plane that turns out not to exist; it is not in the pipeline, it hasn't even been planned, it's just a glint in someone's

eye, or maybe not...

It does not require a degree in rocket science or aviation to recognise that this thinking is deeply flawed. Think about it, and write to the Department of Transport against this make-believe.

Katie Gent

Dear Prospect

I am writing with reference to your article in September's Prospect about car vandalism in which we are asked to help the police by reporting incidents of criminal damage.

Quite recently a fellow dog walker was physically assaulted and his wife racially abused while walking a dog on Mill Hill. Naturally, they reported the incident to the police with a description of the attacker, his car and indeed, his dog. Hearing nothing for several days they contacted the officer assigned to the case to be told that he had over twenty other incidents to deal with and this one did not count as a priority.

If our police are so beleaguered they have no time to deal with a very nasty assault it seems very unlikely they will have the resources to deal with car wing mirrors being snapped off. In which case this request looks rather like a public relations exercise which is simply going to take more of police time away from serious incidents.

Unless, of course things like damage to

cars are now what is regarded as priority.

Yours sincerely
Dr. Anne Mullins

Editor's note: At very short notice we asked the police to comment but unless we receive a response from them before we go to press, we hope to publish a statement from them in our November issue.

Dear Editor

I have read with pleasure your article by Rachel Rickard Straus in the issue of Prospect May 2008 about Sir Richard Burton's grave and thought you might be interested to know what is going on right now about its restoration and all the people involved.

The more publicity we get about the reinstatement of the tomb the better.

Thank you.

Yours sincerely
Yannick Banks, Friends of Burton

Editor's note taken from the Environment Trust newsletter: The project to repair, restore and reinstate the Burton monument is being directed by the Friends of Burton working in collaboration with a project group under the auspices of the Environment Trust. If you wish to help to secure a sound future for the mausoleum and to celebrate the life and interests of Sir Richard Burton, please get in touch with the Environment Trust office 020 8891 5455.



Art on the Hill Festival

6th-12th October 2008

The biennial Art on the Hill Festival returns to the Royal Hospital for Neuro-disability. The biggest fundraising event of the year for the RHN, it aims to raise £100,000 to develop art facilities which will help to enhance the quality of life for patients and residents. A range of events will be held across the week including: an ART AUCTION and champagne party on Thursday 9th; on Friday 10th a LITERARY LUNCH featuring Sheila Hancock and in the evening,

QUESTION TIME: PUTNEY'S PERSPECTIVE chaired by Sir Trevor McDonald; and on Saturday the 11th an ART LECTURE, delivered by popular art historian Barrie Garnham.

An exhibition of photographs for sale to the public will be staged all week in the Exchange Shopping Centre on Lacy Road, Putney.

For details and a booking form see www.rhn.org.uk or contact the Fundraising Department on 020 8780 4565.

Howells Singers

The composer, Herbert Howells, lived in Barnes from 1920 until his death in 1983, during which time he was Director of Music at St Paul's Girls' School, a professor at the Royal College of Music and King Edward VII Professor of Music at London University. Howells Singers was founded in 1984 as a living memorial to Howells and has been recently re-formed.

On Saturday 18th October at 7.30pm, in honour of the composer's birthday (17th October) and to mark the 25th anniversary of

his death, the group returns to the Church of St Michael and All Angels, Barnes, where they gave their inaugural concert *Howells Connections*. They will present a varied programme contrasting the music of Howells and his contemporaries (Stanford, Vaughan Williams) with that of the Tudor period (Tallis, Byrd, Taverner, Sheppard). Tickets available at the door £12 – to include refreshments.

Proceeds will be divided between the charity Under Tree Schools and Howells Singers.



Dear Prospect Readers,

The Prospect editorial team cordially invites you to celebrate the extraordinary life of the Victorian explorer Sir Richard Burton and his wife Lady Isabel on Monday 20th October at their Bedouin tent-styled mausoleum in St Mary Magdalen Church graveyard in Mortlake.

Every year on the anniversary of Sir Richard's death, Lady Isabel used to hold a tea party in his memory at his tomb...

We think it's time for a revival of the tradition.

So, bring a flask of tea and some cupcakes if you can, from 4.30pm on 20th October to help us mark the 118th anniversary of his death and celebrate his astonishing life.





Autumn arrives at the Wetland Centre

Autumn is in the air and we have a full roster of activities planned for the October half term. Our resident 'wetland wizard' has lots of different activities planned for all children who visit during their holidays – plus there are ghost stories and a fancy

dress pumpkin party taking place in the Yurt on Hallowe'en.

Summer highlights in the bird populations include the Honey Buzzard and Stone Curlew, plus the breeding attempt by the Avocets. The breeding success of the Lapwing and Redshank this year has been particularly encouraging. The Sand Martin bank again reached full residency and many visitors were able to view the nests through the small glass panes in the back of the bank. Meanwhile, Pochard have had their best breeding year ever (six broods) – particularly notable as nationally it is a scarce breeding bird – six broods is more than 1% of the national breeding population. Unfortunately the summer was not as good to invertebrates – it was a poor year for dragonflies, damselflies and butterflies.

As well as the first wave of wintering ducks, the end of summer and the changing seasons have brought us a few unexpected visitors. Common Scoters, Godwits and a Great Skua were seen a few times in September – quite rare sightings in London! Our wardens suspect all these birds are moving a bit earlier this year and blame the stormy weather for bringing them inland and knocking them about.

We have had another incredible response to our second WWT Nikon Photography Competition, winners still to be selected at the time of printing. National winners will be announced in October – stay tuned.

Stasa Veroukis



Competitor Phil Bird captures a heron in the evening light

Down on the allotment



Walking through mountain villages in Italy this August, I had to admire the immaculate little vegetable patches beside almost every still-inhabited house. I wished mine were like that. Maybe next year?

Before we left there had been the usual summer holiday dilemma: if the weather has been 'lovely' we risk returning to a parched and

barren patch; if it has been 'awful', the plants will thrive but most of the fruits of my labour will have dropped to the ground and rotted and the courgettes will be a yard long. Solution: find a kind person to look after things – not easy. Fortunately we have lovely neighbours who this year added allotment sitting to looking after our cats, back garden and house plants. They picked and ate as much as they could and I am saving one rather large courgette I found hidden under foliage, the way they do, for their Harvest Festival basket. "Been on holiday have you?" quipped another allotmenteer, glancing down at this specimen, tucked under my arm, as I walked past.

I also found something curious on my return. I had sown a whole packet of wild flower seeds under my apple tree, a 'Mixture – for shady areas. Includes Foxglove, Oxslip, Columbine, Wood Sage and other Wild Flowers'. I was meant to thin them but couldn't distinguish the seedlings from my usual weeds and had to leave nature to take its course. But what did I find? Only a magnificent crop of my usual weeds and rampant mint and nasturtiums, plus an abundance of thriving tomato plants. Can anyone explain this to me? It is very disappointing!

Jack

A bittersweet evening

Following their most recent production, the Barnes Charity Players received this unsolicited letter, which we are delighted to reproduce below.

'I was a young mother with a small child living in London during the last war and was completely unprepared for the dramatic impact *Peace in our Time* would have on me.

The casting of the play was excellent, as was the directing. The acting was so compelling that I almost physically recalled the fear of a German invasion, of the sound of advancing planes and the dreadful anticipation of whether the next bomb would demolish the crowded cellar which had almost become, at times, our permanent bedroom!

The camaraderie of the British in adversity was well portrayed. The pub set, the costumes and dodgy radio, authentic.

Congratulations – and thanks for reminding me of what we owe to those who made victory possible.'

*Barnes Charity Players' next production, the musical **Me and My Girl**, will be at Kitson Hall, Barnes, from Tuesday 2nd-Saturday 6th December.*

FiSH Tuesday Talks



Barnes Green Centre
at 11.00am

Coffee from 10.30am, Talk 11.00am (40 mins)

7th October	Yvonne Wake: <i>Challenges of Healthy Eating</i>
14th October	David Sharp: <i>Thames Path Walk</i>
21st October	To be confirmed
28th October	John Tyman: <i>My Escape to Watercolour Painting</i>
4th November	Iain Radford: <i>Young Soldiers and Wild Animals</i>